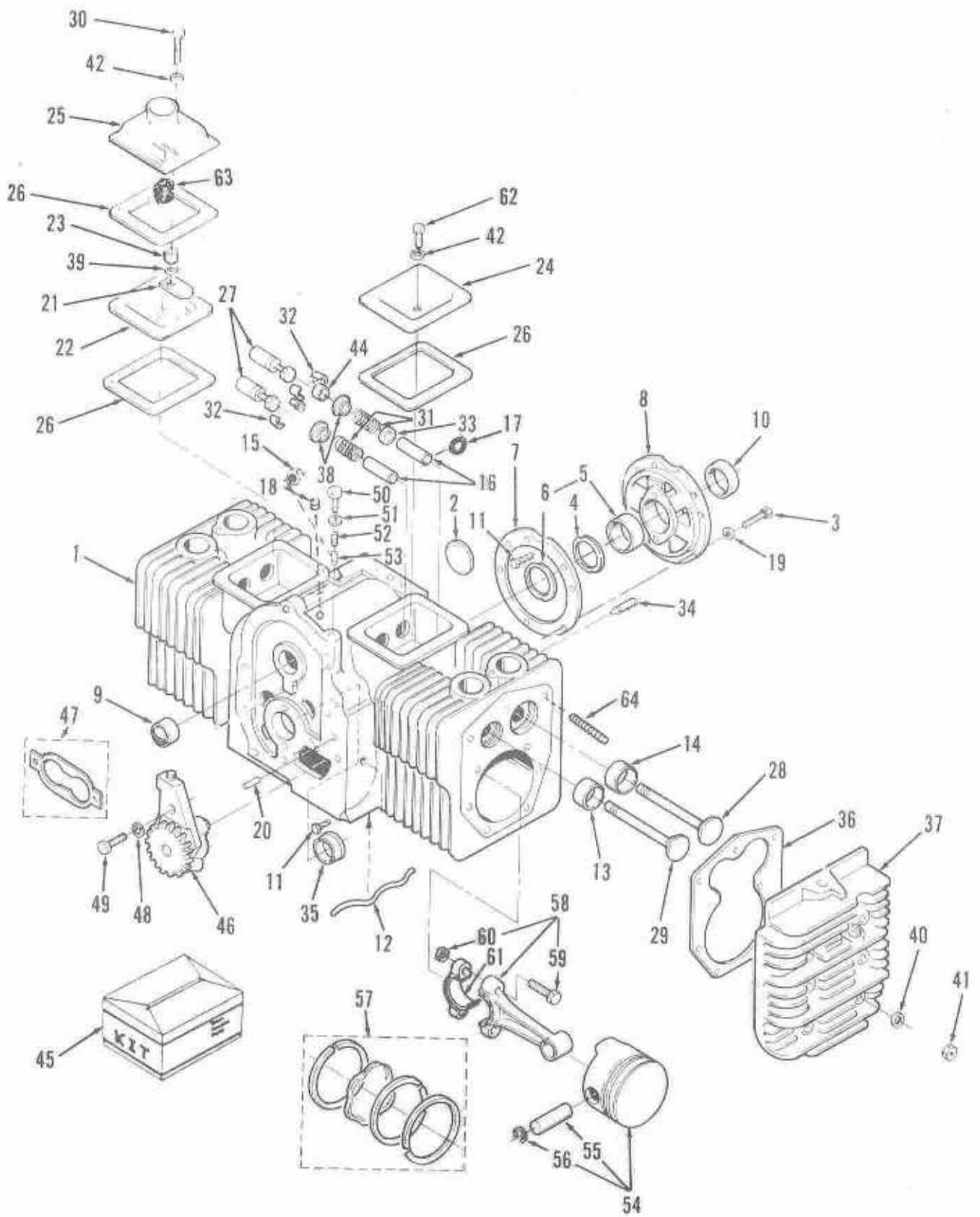


Cylinder Block



5610-0005
5610-0010
5610-0011
5610-0012

Cylinder Block

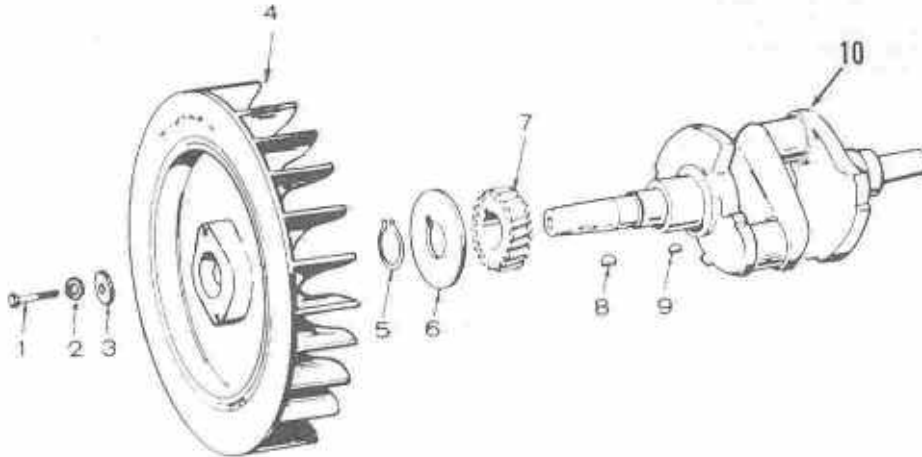
5610-0017
5610-0018
5610-0023
5610-0027

REF NO.	PART NO.	QTY USED	PART DESCRIPTION	REF NO.	PART NO.	QTY USED	PART DESCRIPTION
1		1	Block, Cylinder (Includes Parts Marked *) (See Short Block Catalog #932-0109)	36			Gasket, Cylinder Head
2	517-0048	1	*Plug, Welch - Camshaft Opening (1-5/8")		110-1731	2	Asbestos/Steel
3	102-0455	5	*Screw, Cap - Hex Head (Special)		110-2987	2	Graphoil
4	104-0776	AR	*Shim, Crankshaft (.005")	37	110-3549	2	Head, Cylinder
5			Bearing, Crankshaft (Includes Thrust Washer)	38			Cap, Roto - Valve
	101-0450	1	* Standard		110-0904	2	Exhaust - NHE
	101-0450-02	1	.002" Undersize		110-0904	4	Intake/Exhaust - NHFL
	101-0450-10	1	.010" Undersize	39	526-0018	1	Washer, Flat (1/4" Screw)
	101-0450-20	1	.020" Undersize	40	526-0250	20	Washer, Flat (3/8" Screw)
	101-0450-30	1	.030" Undersize	41	104-0091	20	Nut, Hex (Special)
6	104-0575	1	*Washer, Thrust (Special)	42	526-0018	2	Washer, Flat - Copper (1/4" Screw)
7	101-0415	1	*Gasket, Bearing Plate	44	110-0893	2	Washer, Intake Valve - Spring Retainer (Special) NHE
8	101-0439	1	*Plate, Bearing - Rear	45			Kit, Gasket
9	101-0405	2	*Bearing, Camshaft		168-0140	1	Carbon Removal/Valve Grind
10	509-0041	1	Seal, Oil - Crankshaft Rear		168-0153	1	Engine, Complete
11	516-0072	2	*Pin, Drive - Bearing Stop	46	120-0491	1	Pump, Oil (Components Not Sold Separately)
12	120-0680	1	*Tube, Oil - Cylinder Block	47	120-0161	1	Gasket, Kit - Oil Pump
13			Insert, Valve Seat - Exhaust	48	850-0040	2	Washer, Lock - Spring (1/4")
	110-1716	2	* Standard	49	800-0007	2	Screw, Cap - Hex Head (1/4-20x1")
	110-1716-02	2	.002" Oversize	50	801-0049	1	Screw, Cap - Hex Head (3/8-24x7/8")
	110-1716-05	2	.005" Oversize	51	526-0066	1	Washer, Flat - Copper (3/8" Screw)
	110-1716-10	2	.010" Oversize	52	120-0140	1	Spring, Bypass Valve
	110-1716-25	2	.025" Oversize	53	120-0398	1	Plunger, Bypass Valve
14			Insert, Valve Seat - Intake	54			Piston (Includes Pin And Retaining Rings)
	110-1933	2	* Standard		112-0228	2	Standard
	110-1933-02	2	.002" Oversize		112-0228-05	2	.005" Oversize
	110-1933-05	2	.005" Oversize		112-0228-10	2	.010" Oversize
	110-1933-10	2	.010" Oversize		112-0228-20	2	.020" Oversize
	110-1933-25	2	.025" Oversize		112-0228-30	2	.030" Oversize
15	870-0257	1	Nut, Hex - Self-Locking Governor Bracket (5/16-18)		112-0228-40	2	.040" Oversize
16			*Guide, Valve	55	112-0069	2	Pin, Piston
	110-3167	2	Exhaust	56	518-0294	4	Ring, Retaining
	110-3161	2	Intake	57			Ring Set, Piston
17	110-0068	2	*Gasket, Intake Valve Guide		113-0203	2	Standard
18	517-0103	1	*Plug, Vacuum Port		113-0203-05	2	.005" Oversize
19	850-0050	5	*Washer, Lock - Spring (3/8")		113-0203-10	2	.010" Oversize
20	516-0141	2	*Pin, Alignment - Gear Cover		113-0203-20	2	.020" Oversize
21	123-1175	1	Reed, Breather Valve		113-0203-30	2	.030" Oversize
22	123-1653	1	Pan, Breather		113-0203-40	2	.040" Oversize
23	123-1174	1	Spring, Breather Valve	58	114-0203	2	Rod, Connecting
24	110-1624	1	Cover, Valve - RH				(Includes Bolt And Nut)
25	123-1654	1	Cover, Breather	59	805-0010	4	Bolt, Place - Connecting Rod (Special)
26	110-1720	3	Gasket, Valve Cover	60	870-0302	4	Nut, Self-Locking (5/16-24)
27			Tappet, Valve	61			Bearing, Half - Connecting Rod
	115-0006	4	Standard		114-0188	4	Standard
	115-0006-02	4	.002" Oversize		114-0188-02	4	.002" Undersize
	115-0006-05	4	.005" Oversize		114-0188-10	4	.010" Undersize
28	110-1718	2	Valve, Intake		114-0188-20	4	.020" Undersize
29	110-1781	2	Valve, Exhaust		114-0188-30	4	.030" Undersize
30	800-0013	1	Screw, Cap - Hex Head (1/4-20x2-1/2")	62	800-0011	1	Screw, Cap - Hex Head (1/4-20x2")
31	110-0539	4	Spring, Valve	63	123-1417	1	Filter, Breather Tube - Gasoline
32	110-0639	8	Lock, Valve Spring	64			*Stud, Cylinder Head Mounting
33	509-0168	2	Seal, Oil - Intake Valve		520-0919	8	3/8 x 2-19/32" - (Install 4 Bottom Holes - RH, LH Heads)
34	803-0071	2	Screw, Socket - Set (3/8-16x5/8")		520-0876	4	3/8 x 2-3/4" - (Install 2 Top Holes - RH, LH Heads)
35			Bearing, Crankshaft - Front (Flanged)		520-0918	8	3/8 x 3" - (Install 4 Middle Holes - RH, LH Heads)
	101-0432	1	* Standard				
	101-0432-02	1	.002" Undersize				
	101-0432-10	1	.010" Undersize				
	101-0432-20	1	.020" Undersize				
	101-0432-30	1	.030" Undersize				

* - Parts Included in Cylinder Block.

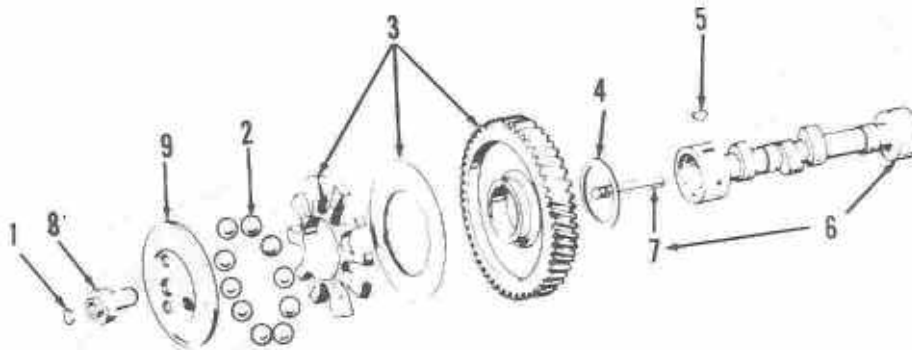
Crankshaft And Flywheel

5600-0014
5610-0009



CT-1084

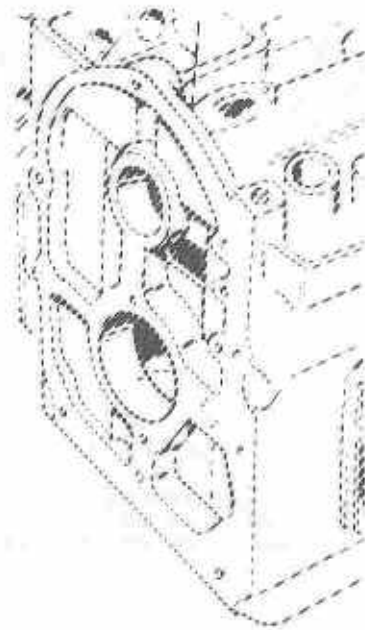
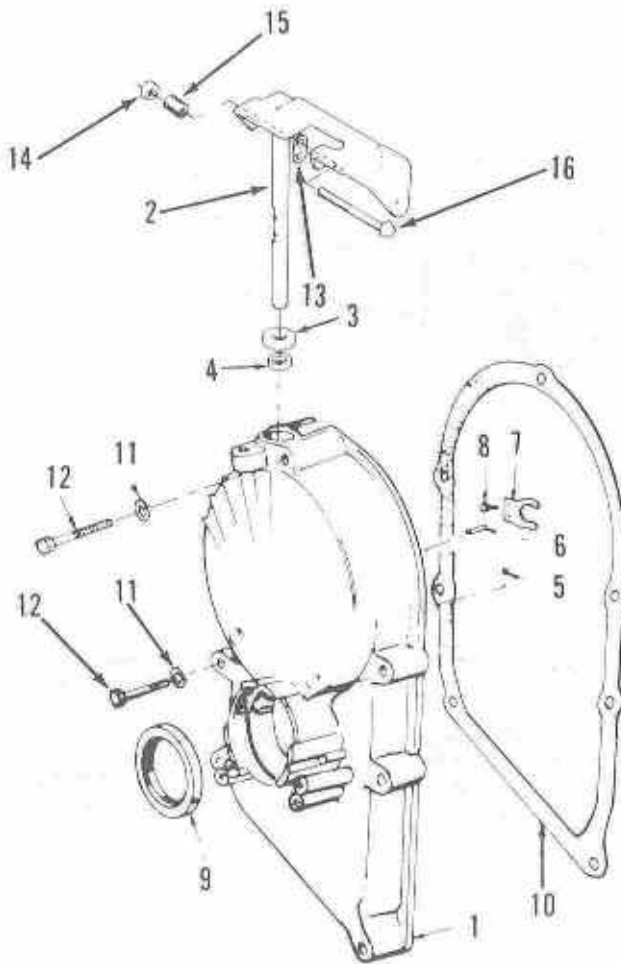
REF NO.	PART NO.	QTY USED	PART DESCRIPTION	REF NO.	PART NO.	QTY USED	PART DESCRIPTION
1	104-0170	1	Screw, Cap - Hex Head (Special)	6	104-0043	1	Washer, Gear
2	526-0356	1	Washer, Flat (7/16" Screw)	7	104-0032	1	Gear, Crankshaft
3	526-0017	1	Washer, Flat (7/16" Screw)	8	515-0227	1	Kit, Key - Blower Wheel
4	134-4342	1	Flywheel, (Blower)	9	515-0001	1	Key, Crankshaft Gear
5	518-0014	1	Ring, Retaining	10	104-1584	1	Crankshaft



C-1084

REF NO.	PART NO.	QTY USED	PART DESCRIPTION	REF NO.	PART NO.	QTY USED	PART DESCRIPTION
1	150-0078	1	Ring, Retaining	5	515-0001	1	Key, Woodruff
2	510-0015	10	Ball, Governor	6	105-0638	1	Camshaft (Includes Center Pin)
3	105-0332	1	Gear, Camshaft (Includes Flyball Plate And Spacer)	7	150-0075	1	Pin, Center - Camshaft
4	105-0541	1	Washer, Thrust	8	150-1519	1	Hub, Governor Cup
				9	150-1520	1	Cup And Bushing, Governor

Gearcase



FS-1596

REF NO.	PART NO.	QTY USED	PART DESCRIPTION
1	103-0772	1	Gearcase (Kit) (Includes Parts Marked*)
2	150-2002	1	*Arm And Shaft, Governor
3	509-0008	1	*Seal, Oil - Governor Shaft
4	510-0013	1	*Bearing, Needle
5	510-0014	1	*Ball, Bearing
6	516-0130	1	*Pin, Dowel - Governor Cup Stop
7	150-1187	1	*Yoke, Governor
8	815-0046	2	*Screw, Machine - Pen Head (8-32x3/8")
9	509-0040	1	*Seal, Oil - Crankshaft

REF NO.	PART NO.	QTY USED	PART DESCRIPTION
10	103-0408	1	Gasket, Gearcase Mounting
11	526-0065	5	Washer, Flat - Copper (5/16" Screw)
12			Screw, Cap - Hex Head (Special)
	114-0022	4	1-3/4" Long
	800-0545	1	2-3/4" Long
13	150-1998	1	*Link, Governor Spring
14	870-0328	1	*Nut, Self-Lock (10-32")
15	141-0710	1	*Spring
16	820-1077	1	*Screw, Pan Head (10-32x2-1/2")

* - Parts Included In 103-0772 Gearcase.