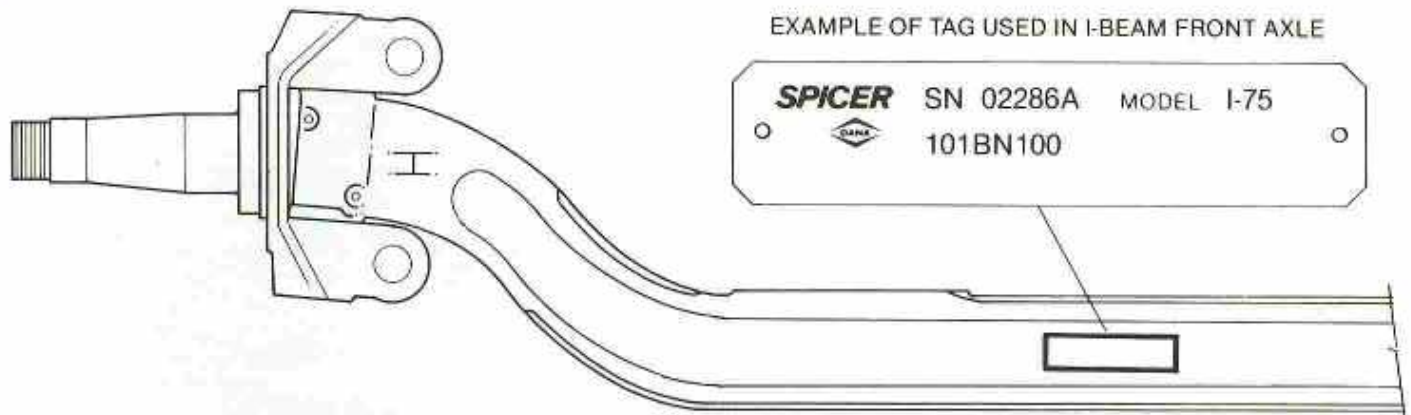


## Axle Identification

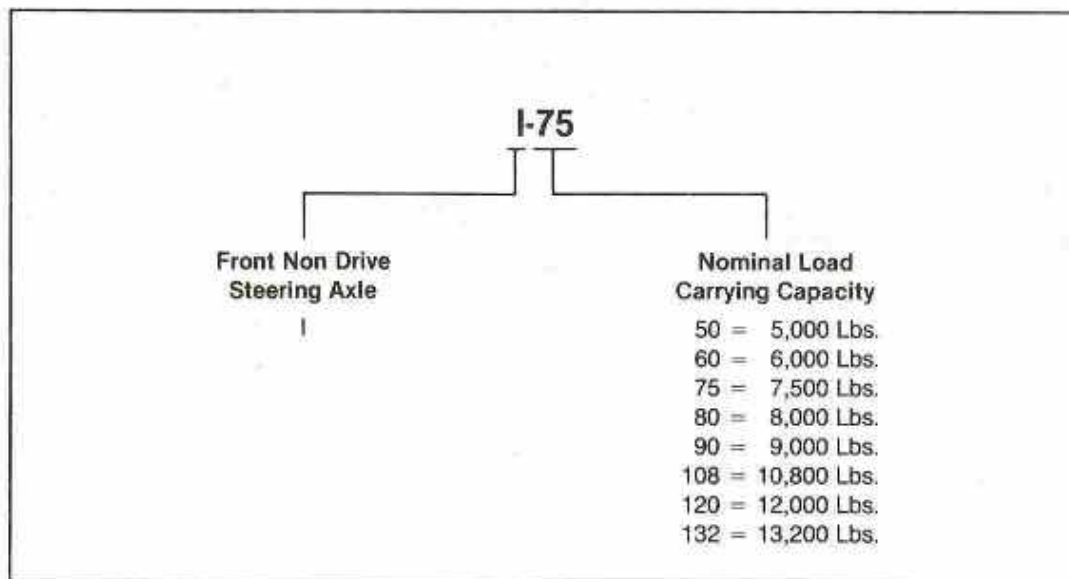


The Spicer front non drive steering axles are identified with a tag located between the spring pads, on the front side of the center beam section.

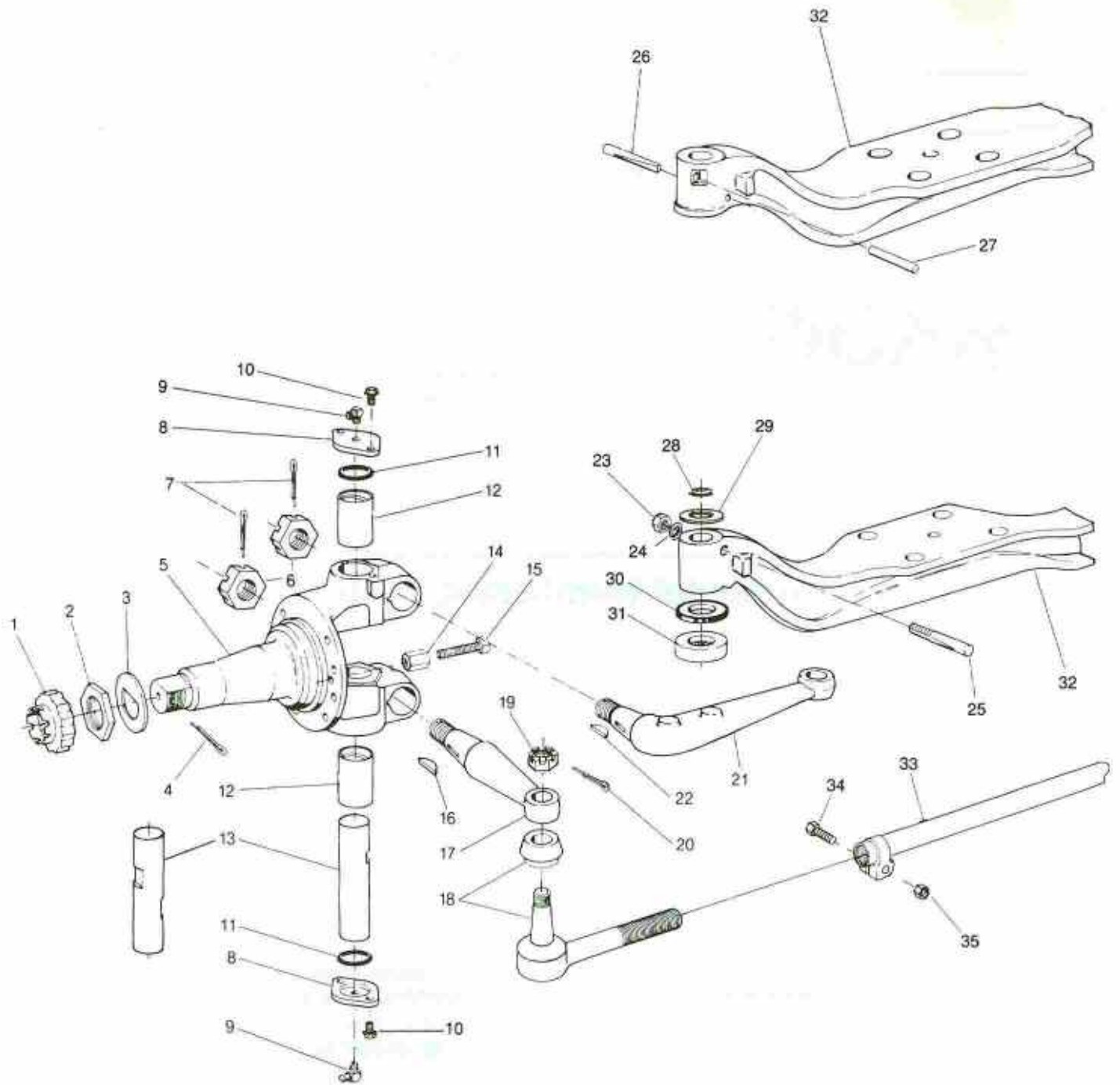
The axle tag contains the serial number, the model number, and the assembly number.

## Spicer Heavy Axle Model Numbering System

The Spicer model numbering system provides pertinent information about the axle for easy identification. Example:



# Axle Components — Models I-50, I-60, I-75, I-80



# Part Numbers — Models I-50, I-60, I-75, I-80

ITEM	DESCRIPTION	I-50	I-60	I-75	I-80	QTY.
1	Wheel Bearing Lock Nut	070HN151	070HN151	070HN151	070HN151	2Ⓞ
2	Spindle Nut	441256C1	441256C1	441256C1	441256C1	2ⓄⓄ
3	Bearing Retainer Washer	070HN150	070HN150	070HN150	070HN150	2Ⓞ
4	Cotter Pin .187 x 1.500	500026-9	500026-9	500026-9	500026-9	2
5	Steering Knuckle Assembly (Includes Item 12)					
	Right (For Single Draw Key)	441232C91	441232C91	441240C91		1
	Left (For Single Draw Key)	441229C91	441229C91	441237C91		1
	Right (For Dual Draw Key)			101SK103-1X	101SK103-1X	1
	Left (For Dual Draw Key)			101SK100-1X	101SK100-1X	1
6	Tie Rod Arm & Steering Arm Slotted Nut	141037H	141037H	141037H	141037H	3
7	Cotter Pin .187 x 2.000	103411	103411	103411	103411	3
8*	King Pin Cap					
	New Style (Cast)	071SC101	071SC101	071SC101	071SC101	4
	Old Style (Stamped)		See Footnote**			
9	Grease Fitting	109460	109460	109460	109460	4
10*	Screw & Lock Washer Assembly					
	New Style Cast Cap .312-18 x .875	101HM101	101HM101	101HM101	101HM101	8
	Old Style (Stamped Cap) .312-18 x .750	070HM161	070HM161	070HM161	070HM161	8
11*	Steering Knuckle Cap O-Ring					
	New Style (Cast Cap)	382418R1	382418R1	382418R1	382418R1	4
	Old Style (Stamped Cap)	370944R1	370944R1	370944R1	370944R1	4
12*	Steering Knuckle Bushing	Serviced As A Kit Only				2
13*	Steering Knuckle King Pin	See Page 7				2
14	Steering Knuckle Stop Nut	500380-5	500380-5	500380-5	500380-5	2
15	Steering Knuckle Stop Screw					
	.500-13 x 1.25	575959C1	575959C1	575959C1		2
	.500-13 x 1.38	575960C1	575960C1	575960C1		2
	.500-13 x 1.75				101HM100-1	2
16	Steering Arm Key	22246R1	22246R1	22246R1	22246R1	
17	Tie Rod Arm	As Specified (See O.E.M. Catalog)				2
18*	Tie Rod End & Dust Cover	Serviced As A Kit Only				2
19*	Tie Rod End Nut .750 N.F.	See Page 7				2
20	Cotter Pin .125 x 1.250	103386	103386	103386	103386	2
21	Steering Arm	As Specified (See O.E.M. Catalog)				1
22	Steering Arm Key (Square)	22246R1	22246R1	22246R1	22246R1	1
23*	King Pin Draw Key Nut .375-16 Grade 8	25522R1	25522R1	25522R1	25522R1	2
24*	Lock Washer .375 R.	120382	120382	120382	120382	2
25*	King Pin Draw Key Single (Threaded)	071HP100	071HP100	071HP100	071HP100	2
26*	King Pin Draw Key (Inner)					
	1.810 (Tapered Length)	228877R1	228877R1	228877R1	228877R1	2
	1.690 (Tapered Length)	228876R1	228876R1	228876R1	228876R1	2
	1.560 (Tapered Length)	228875R1	228875R1	228875R1	228875R1	2
27*	King Pin Draw Key (Outer)					
	1.630 (Tapered Length)	150768R1	150768R1	150768R1	150768R1	2
	1.880 (Tapered Length)	584214C1	584214C1	584214C1	584214C1	2
	1.880 (Tapered Length)	150767R1	150767R1	150767R1	150767R1	2
	1.775 (Tapered Length)	698773R1	698773R1	698773R1	698773R1	2
	1.505 (Tapered Length)	584213C1	584213C1	584213C1	584213C1	2
28*	King Pin Oil Seal (Upper)	441261C91	441261C91	441261C91	441261C91	2
29*	Steering Knuckle Shim					
	.005 Thick	441243C1	441243C1	441243C1	441243C1	A/R†
	.010 Thick	441244C1	441244C1	441244C1	441244C1	A/R†
30*	King Pin Oil Seal (Lower)	441295C91	441295C91	441295C91	441295C91	2
31*	Steering Knuckle Thrust Bearing	441242C1	441242C1	441242C1	441242C1	2
32	I-Beam	As Specified (See O.E.M. Catalog)				1
33*	Tie Rod Tube & Clamp Ass'y.	Serviced As A Kit Only				1
34*	Tie Rod Clamp Bolt	See Page 7				2
35*	Tie Rod Clamp Nut	See Page 7				2

\* Included in service parts kits

\*\* When replacing king pin cap 441245C1 with 071SC101, bolt & lockwasher CGAHM111 and O-ring 382418R1 must be used.

† As required.

Ⓞ Assemblies without wheel ends

Ⓞ Assemblies with wheel ends